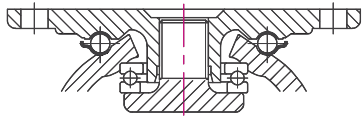


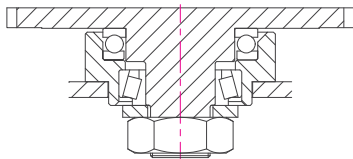
FOOT MASTER®

Shock absorbing casters GSST series

kg 400~1,350kg RoHS -10~90°C



GSST(130~200W)



GSST(250)

Towing by power vehicle(20km/h)


Brackets: Forged steel plate, ball bearing with hardened bearing seats and thrust bearing in the swivel head(250 series: thrust bearing and taper roller bearing), rugged pressed steel frame with ivory color after welding, fine shock absorption function with special rubber(select between A65 and A75), towing by power vehicle(20km/h), strong top brake system, bolted wheel axle structure

Surface Treatment: Powder coating, zinc plated

* Recommended Load = Load Cap. × 3

Swivel	Rigid	Swivel with brake	Wheel type	Cushion	mm	mm	Kg	mm	mm	mm	mm	mm
GSST-130-ASF	GSST-130-ARF	GSST-130-BSF	HUD	65° / 75°	130	40	400	200-21	46~55	160x120	135x85 125x65	15
GSST-150-ASF	GSST-150-ARF	GSST-150-BSF			150	40	400	232-30	46~61			
GSST-200-ASF	GSST-200-ARF	GSST-200-BSF			200	40	400	276-30	50~70			
GSST-200W-ASF	GSST-200W-ARF	-	HUD	75°	200	48	500	279-30	50~68	160x135	140x105 105x80	14
GSST-250-ASF	GSST-250-ARF	-	HUD	65° / 75°	250	60	1,350	362-30	78~92	175x140	148x111 132x99	14

Options

												
Code Suffix	HUD											
Description	Cast PU(A95)											
Available for	130 ~ 250											